

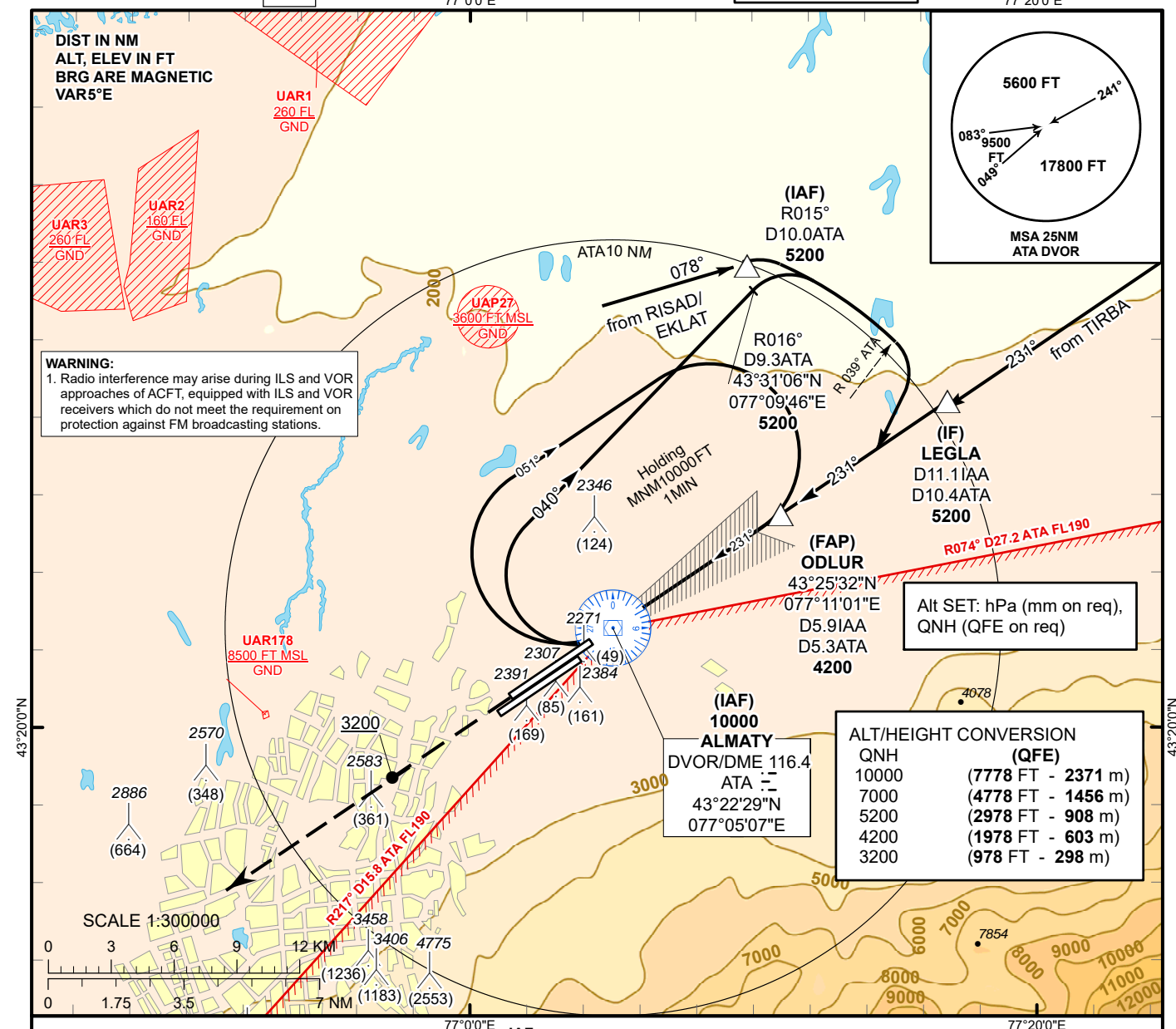
INSTRUMENT  
APPROACH  
CHART - ICAO

ILS  
LLZ 111.3  
IAA  
GP 332.3  
CH 50X

AERODROME ELEV **2238 FT**  
HEIGHTS RELATED TO  
THR RWY 23R - ELEV **2222 FT**

ALMATY APPROACH 118.3  
ALMATY RADAR 126.8  
ALMATY TOWER 119.4  
ALMATY ATIS (EN) 129.8  
ALMATY ATIS (RU) 135.1

ALMATY  
ILS/DME Z  
RWY 23R



MISSED APPROACH

Climb on track 231° to 5200.  
After passing 3200 radar vectoring will be provided.

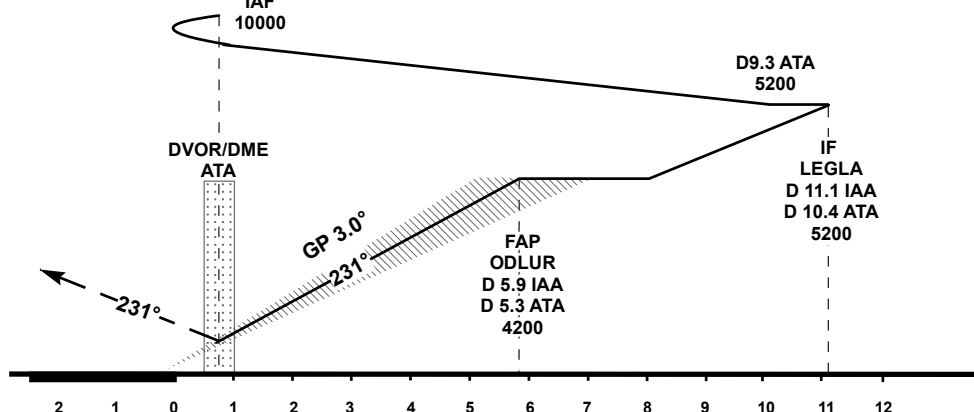
RADIO FAILURE:

In case of RCF climb on track 231° to 5200 FT, turn RIGHT to ATA, but not earlier than 6.5 NM ATA.  
Climb to 10000 FT (not below) to ATA and join to holding pattern.

TRANSITION ALT  
10000

ILS RDH 54

ELEV 2222  
THR RWY 23R



CHANGE: ILS CAT.

Aircraft Category		A	B	C	D	DIST to THR DME IAA	NM	1	2	3	4	5	5.9
Straight-in Approach OCA/H	CAT I	2422(200)	2422(200)	2422(200)	2422(200)	DME ATA	NM	0.3	1.3	2.3	3.3	4.3	5.3
						ALTITUDE	FT	2595	2916	3239	3563	3890	4200
						HEIGHT	FT	373	694	1017	1341	1668	1978
DME IAA ZERO RANGED TO THR RWY 23R													
Aerodrome Operating Minima DH ft x RVR(CMV)	CAT I					GS	Kt	80	100	120	140	160	180
						Desc. Rate (5.2%)	ft/min	420	530	630	740	840	950

ALMATY  
ILS/DME Z CAT II, III

AERONAUTICAL DATA TABULATION

ILS approach to RWY23R from ATA DVOR/DME, LEGLA	
Fix/point	Coordinates
ATA DVOR/DME	43° 22' 29.4"N 077° 05' 07.0"E
IAA D5.9 ATA D5.3 (FAP ODLUR)	43° 25' 32.4"N 077° 11' 01.0"E
LEGLA (IF) IAA D11.1 ATA 10.4	43° 28' 25.5"N 077° 16' 54.3"E
R 015° D10.0 ATA (IAF)	43° 31' 55.5"N 077° 09' 49.0"E
THR RWY 23R	43° 22' 12.33"N 077° 04' 16.00"E
IAA LOC	43° 20' 37.6"N 077° 01' 04.8"E